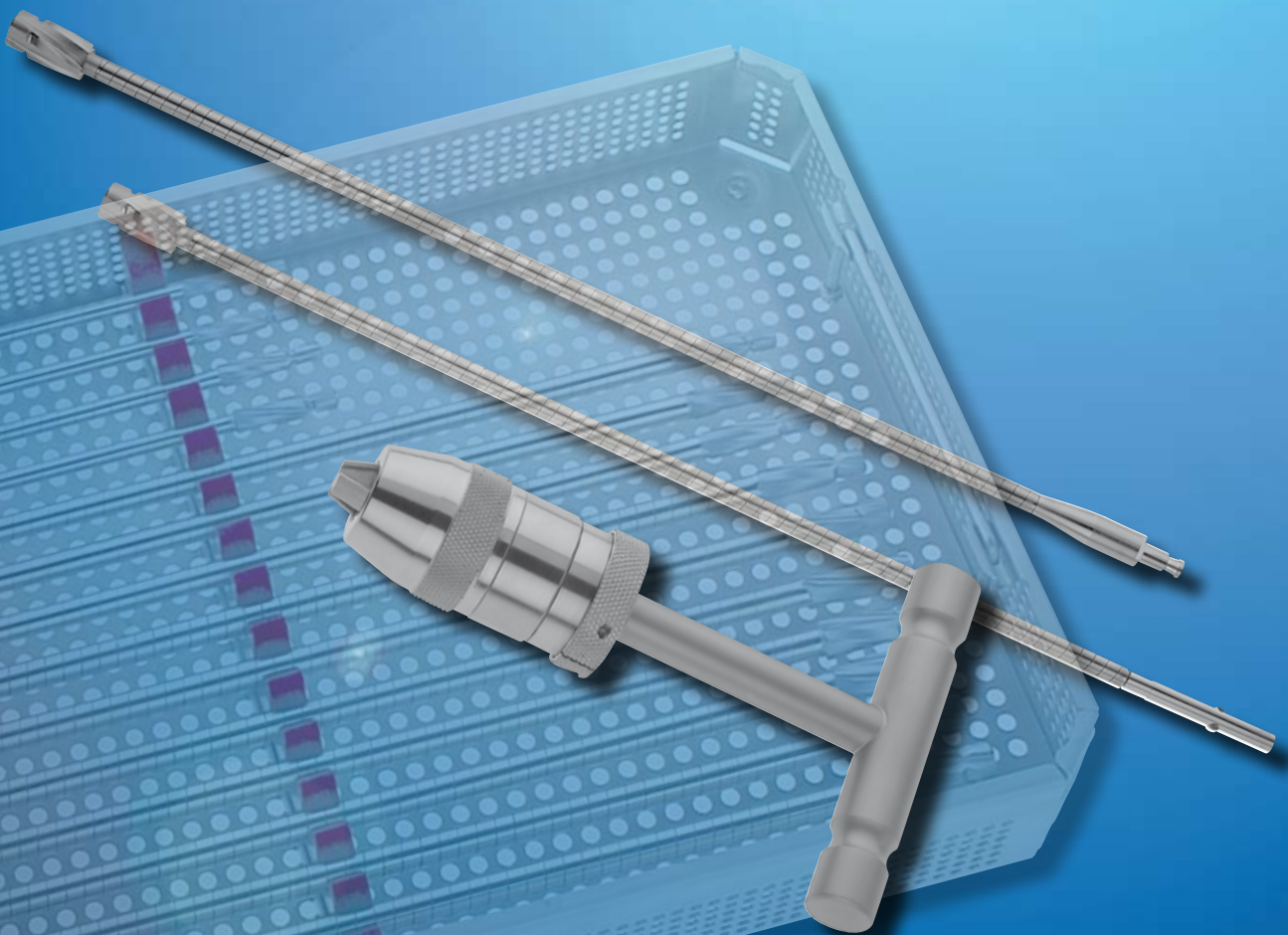


# MATTES

INSTRUMENTE GmbH  
MEDIZINTECHNIK

## FLEXIBLE INTRAMEDULLARY REAMER SYSTEM



with different connections  
and cutting edges

**M 101000  
COMPLETE FLEXIBLE MEDULLARY REAMER SET**

**M 101010 Flexible Reamer Set Trays (2 pieces), empty**



**FLEXIBLE REAMERS WITH AESCULAP CONNECTION  
AND SYNTHES CUTTING EDGE NOTE:  
REF.-NO. with identification= \* are included in Set M 101000**

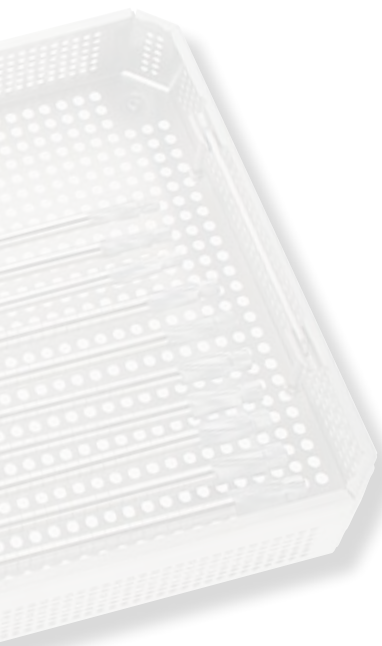


**Recommended Container for M 101000  
(are not included in the Set)**

**1510010**      1 x Lid  
**1510135**      1 x Bottom

**M 101000 COMPLETE FLEXIBLE MEDULLARY REAMER SET**

**FLEXIBLE REAMERS WITH AESCULAP CONNECTION  
AND SYNTHES CUTTING EDGE NOTE:  
REF.-NO. with identification= \* are included in M 101000**



REF.-No.	Description Set Listing
<b>M 101010</b>	Flexible Reamer Set Trays (2 pieces), empty
<b>110020</b>	Flexible Medullary Reamers Dia. 6.0 mm
<b>110040</b>	Flexible Medullary Reamers Dia. 6.5 mm
<b>110060</b>	Flexible Medullary Reamers Dia. 7.0 mm
<b>110080</b>	Flexible Medullary Reamers Dia. 7.5 mm
<b>110100</b>	Flexible Medullary Reamers Dia. 8.0 mm
<b>110120</b>	Flexible Medullary Reamers Dia. 8.5 mm
<b>110140</b>	Flexible Medullary Reamers Dia. 9.0 mm
<b>110160</b>	Flexible Medullary Reamers Dia. 9.5 mm
<b>110180</b>	Flexible Medullary Reamers Dia. 10.0 mm
<b>110200</b>	Flexible Medullary Reamers Dia. 10.5 mm
<b>110220</b>	Flexible Medullary Reamers Dia. 11.0 mm
<b>110240</b>	Flexible Medullary Reamers Dia. 11.5 mm
<b>110260</b>	Flexible Medullary Reamers Dia. 12.0 mm
<b>110280</b>	Flexible Medullary Reamers Dia. 12.5 mm
<b>110300</b>	Flexible Medullary Reamers Dia. 13.0 mm
<b>110320</b>	Flexible Medullary Reamers Dia. 13.5 mm
<b>110340</b>	Flexible Medullary Reamers Dia. 14.0 mm
<b>110360</b>	Flexible Medullary Reamers Dia. 14.5 mm
<b>110380</b>	Flexible Medullary Reamers Dia. 15.0 mm
<b>110400</b>	Flexible Medullary Reamers Dia. 15.5 mm
<b>110420</b>	Flexible Medullary Reamers Dia. 16.0 mm
<b>110440</b>	Flexible Medullary Reamers Dia. 16.5 mm
<b>110460</b>	Flexible Medullary Reamers Dia. 17.0 mm

**FLEXIBLE REAMERS WITH AESCULAP CONNECTION  
AND SYNTHES CUTTING EDGE NOTE:  
REF.-NO. with identification= \* are included in Set M 101000**



REF.-No.	Description
110020	Flexible Reamers Dia. 6.0 mm
110040	Flexible Reamers Dia. 6.5 mm
110060	Flexible Reamers Dia. 7.0 mm
110080	Flexible Reamers Dia. 7.5 mm
110100	Flexible Reamers Dia. 8.0 mm
110120	Flexible Reamers Dia. 8.5 mm
110140	Flexible Reamers Dia. 9.0 mm
110160	Flexible Reamers Dia. 9.5 mm
110180	Flexible Reamers Dia. 10.0 mm
110200	Flexible Reamers Dia. 10.5 mm
110220	Flexible Reamers Dia. 11.0 mm
110240	Flexible Reamers Dia. 11.5 mm
110260	Flexible Reamers Dia. 12.0 mm
110280	Flexible Reamers Dia. 12.5 mm
110300	Flexible Reamers Dia. 13.0 mm
110320	Flexible Reamers Dia. 13.5 mm
110340	Flexible Reamers Dia. 14.0 mm
110360	Flexible Reamers Dia. 14.5 mm
110380	Flexible Reamers Dia. 15.0 mm
110400	Flexible Reamers Dia. 15.5 mm
110420	Flexible Reamers Dia. 16.0 mm
110440	Flexible Reamers Dia. 16.5 mm
110460	Flexible Reamers Dia. 17.0 mm
110480	Flexible Reamers Dia. 17.5 mm
110500	Flexible Reamers Dia. 18.0 mm

## FLEXIBLE REAMERS WITH AESCULAP CONNECTION AND OSTEO CUTTING EDGE



REF.-No.	Description
10106002	Flexible Reamers Dia. 6.0 mm
10106504	Flexible Reamers Dia. 6.5 mm
10107006	Flexible Reamers Dia. 7.0 mm
10107508	Flexible Reamers Dia. 7.5 mm
10108001	Flexible Reamers Dia. 8.0 mm
10108502	Flexible Reamers Dia. 8.5 mm
10109004	Flexible Reamers Dia. 9.0 mm
10109506	Flexible Reamers Dia. 9.5 mm
10101008	Flexible Reamers Dia. 10.0 mm
10111000	Flexible Reamers Dia. 10.5 mm
10111102	Flexible Reamers Dia. 11.0 mm
10121004	Flexible Reamers Dia. 11.5 mm
10121206	Flexible Reamers Dia. 12.0 mm
10131208	Flexible Reamers Dia. 12.5 mm
10131300	Flexible Reamers Dia. 13.0 mm
10141302	Flexible Reamers Dia. 13.5 mm
10141404	Flexible Reamers Dia. 14.0 mm
10151406	Flexible Reamers Dia. 14.5 mm
10151508	Flexible Reamers Dia. 15.0 mm
10161500	Flexible Reamers Dia. 15.5 mm
10161602	Flexible Reamers Dia. 16.0 mm
10171604	Flexible Reamers Dia. 16.5 mm
10171706	Flexible Reamers Dia. 17.0 mm
10181708	Flexible Reamers Dia. 17.5 mm
10181800	Flexible Reamers Dia. 18.0 mm

## FLEXIBLE REAMERS WITH AESCULAP CONNECTION AND AESCULAP CUTTING EDGE



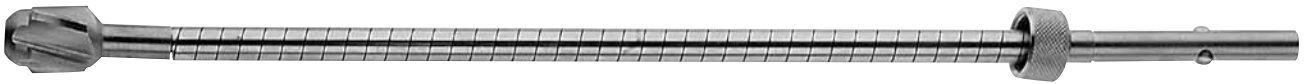
REF.-No.	Description
1019600	Flexible Reamers Dia. 6.0 mm
1019650	Flexible Reamers Dia. 6.5 mm
1019700	Flexible Reamers Dia. 7.0 mm
1019750	Flexible Reamers Dia. 7.5 mm
1019800	Flexible Reamers Dia. 8.0 mm
1019850	Flexible Reamers Dia. 8.5 mm
1019900	Flexible Reamers Dia. 9.0 mm
1019950	Flexible Reamers Dia. 9.5 mm
1020100	Flexible Reamers Dia. 10.0 mm
1020110	Flexible Reamers Dia. 10.5 mm
1021110	Flexible Reamers Dia. 11.0 mm
1021120	Flexible Reamers Dia. 11.5 mm
1022120	Flexible Reamers Dia. 12.0 mm
1023120	Flexible Reamers Dia. 12.5 mm
1023130	Flexible Reamers Dia. 13.0 mm
1024140	Flexible Reamers Dia. 13.5 mm
1025140	Flexible Reamers Dia. 14.0 mm
1026140	Flexible Reamers Dia. 14.5 mm
1026150	Flexible Reamers Dia. 15.0 mm
1027150	Flexible Reamers Dia. 15.5 mm
1027160	Flexible Reamers Dia. 16.0 mm
1028160	Flexible Reamers Dia. 16.5 mm
1028170	Flexible Reamers Dia. 17.0 mm
1029170	Flexible Reamers Dia. 17.5 mm
1029180	Flexible Reamers Dia. 18.0 mm

## FLEXIBLE REAMERS WITH AESCULAP CONNECTION AND SYNTHES CUTTING EDGE WITH CONNECTING NUT



REF.-No.	Description
1287020	Flexible Reamers Dia. 6.0 mm
1287040	Flexible Reamers Dia. 6.5 mm
1287060	Flexible Reamers Dia. 7.0 mm
1287080	Flexible Reamers Dia. 7.5 mm
1288010	Flexible Reamers Dia. 8.0 mm
1288012	Flexible Reamers Dia. 8.5 mm
1288014	Flexible Reamers Dia. 9.0 mm
1288016	Flexible Reamers Dia. 9.5 mm
1288018	Flexible Reamers Dia. 10.0 mm
1288020	Flexible Reamers Dia. 10.5 mm
1288022	Flexible Reamers Dia. 11.0 mm
1288024	Flexible Reamers Dia. 11.5 mm
1288026	Flexible Reamers Dia. 12.0 mm
1288028	Flexible Reamers Dia. 12.5 mm
1288030	Flexible Reamers Dia. 13.0 mm
1288032	Flexible Reamers Dia. 13.5 mm
1288034	Flexible Reamers Dia. 14.0 mm
1288036	Flexible Reamers Dia. 14.5 mm
1288038	Flexible Reamers Dia. 15.0 mm
1288040	Flexible Reamers Dia. 15.5 mm
1288042	Flexible Reamers Dia. 16.0 mm
1288044	Flexible Reamers Dia. 16.5 mm
1288046	Flexible Reamers Dia. 17.0 mm
1288048	Flexible Reamers Dia. 17.5 mm
1288050	Flexible Reamers Dia. 18.0 mm

## FLEXIBLE REAMERS WITH AESCULAP CONNECTION AND OSTEO CUTTING EDGE WITH CONNECTING NUT



REF.-No.	Description
0138802	Flexible Reamers Dia. 6.0 mm
0138804	Flexible Reamers Dia. 6.5 mm
0138806	Flexible Reamers Dia. 7.0 mm
0138808	Flexible Reamers Dia. 7.5 mm
0138810	Flexible Reamers Dia. 8.0 mm
0138812	Flexible Reamers Dia. 8.5 mm
0138814	Flexible Reamers Dia. 9.0 mm
0138816	Flexible Reamers Dia. 9.5 mm
0138818	Flexible Reamers Dia. 10.0 mm
0138820	Flexible Reamers Dia. 10.5 mm
0138822	Flexible Reamers Dia. 11.0 mm
0138824	Flexible Reamers Dia. 11.5 mm
0138826	Flexible Reamers Dia. 12.0 mm
0138828	Flexible Reamers Dia. 12.5 mm
0138830	Flexible Reamers Dia. 13.0 mm
0138832	Flexible Reamers Dia. 13.5 mm
0138834	Flexible Reamers Dia. 14.0 mm
0138836	Flexible Reamers Dia. 14.5 mm
0138838	Flexible Reamers Dia. 15.0 mm
0138840	Flexible Reamers Dia. 15.5 mm
0138842	Flexible Reamers Dia. 16.0 mm
0138844	Flexible Reamers Dia. 16.5 mm
0138846	Flexible Reamers Dia. 17.0 mm
0138848	Flexible Reamers Dia. 17.5 mm
0138850	Flexible Reamers Dia. 18.0 mm



## FLEXIBLE REAMERS WITH AESCULAP CONNECTION AND AESCULAP CUTTING EDGE WITH CONNECTING NUT



REF.-No.	Description
0138902	Flexible Reamers Dia. 6.0 mm
0138904	Flexible Reamers Dia. 6.5 mm
0138906	Flexible Reamers Dia. 7.0 mm
0138908	Flexible Reamers Dia. 7.5 mm
0138910	Flexible Reamers Dia. 8.0 mm
0138912	Flexible Reamers Dia. 8.5 mm
0138914	Flexible Reamers Dia. 9.0 mm
0138916	Flexible Reamers Dia. 9.5 mm
0138918	Flexible Reamers Dia. 10.0 mm
0138920	Flexible Reamers Dia. 10.5 mm
0138922	Flexible Reamers Dia. 11.0 mm
0138924	Flexible Reamers Dia. 11.5 mm
0138926	Flexible Reamers Dia. 12.0 mm
0138928	Flexible Reamers Dia. 12.5 mm
0138930	Flexible Reamers Dia. 13.0 mm
0138932	Flexible Reamers Dia. 13.5 mm
0138934	Flexible Reamers Dia. 14.0 mm
0138936	Flexible Reamers Dia. 14.5 mm
0138938	Flexible Reamers Dia. 15.0 mm
0138940	Flexible Reamers Dia. 15.5 mm
0138942	Flexible Reamers Dia. 16.0 mm
0138944	Flexible Reamers Dia. 16.5 mm
0138946	Flexible Reamers Dia. 17.0 mm
01389048	Flexible Reamers Dia. 17.5 mm
0138950	Flexible Reamers Dia. 18.0 mm

## FLEXIBLE REAMERS WITH AO-SYNTHES CONNECTION AND SYNTHES CUTTING EDGE



REF.-No.	Description
10306002	Flexible Reamers Dia. 6.0 mm
10306504	Flexible Reamers Dia. 6.5 mm
10307006	Flexible Reamers Dia. 7.0 mm
10307508	Flexible Reamers Dia. 7.5 mm
10308000	Flexible Reamers Dia. 8.0 mm
10308502	Flexible Reamers Dia. 8.5 mm
10309004	Flexible Reamers Dia. 9.0 mm
10309506	Flexible Reamers Dia. 9.5 mm
10311008	Flexible Reamers Dia. 10.0 mm
10321000	Flexible Reamers Dia. 10.5 mm
10321102	Flexible Reamers Dia. 11.0 mm
10331204	Flexible Reamers Dia. 11.5 mm
10341206	Flexible Reamers Dia. 12.0 mm
10351208	Flexible Reamers Dia. 12.5 mm
10351300	Flexible Reamers Dia. 13.0 mm
10361302	Flexible Reamers Dia. 13.5 mm
10361404	Flexible Reamers Dia. 14.0 mm
10371406	Flexible Reamers Dia. 14.5 mm
10371508	Flexible Reamers Dia. 15.0 mm
10381500	Flexible Reamers Dia. 15.5 mm
10381602	Flexible Reamers Dia. 16.0 mm
10391604	Flexible Reamers Dia. 16.5 mm
10391706	Flexible Reamers Dia. 17.0 mm
10401708	Flexible Reamers Dia. 17.5 mm
10401800	Flexible Reamers Dia. 18.0 mm

## FLEXIBLE REAMERS WITH AO-SYNTHES CONNECTION AND OSTEO CUTTING EDGE



REF.-No.	Description
10406002	Flexible Reamers Dia. 6.0 mm
10406504	Flexible Reamers Dia. 6.5 mm
10407006	Flexible Reamers Dia. 7.0 mm
10407508	Flexible Reamers Dia. 7.5 mm
10408000	Flexible Reamers Dia. 8.0 mm
10408502	Flexible Reamers Dia. 8.5 mm
10409004	Flexible Reamers Dia. 9.0 mm
10409506	Flexible Reamers Dia. 9.5 mm
10411008	Flexible Reamers Dia. 10.0 mm
10411100	Flexible Reamers Dia. 10.5 mm
10421102	Flexible Reamers Dia. 11.0 mm
10431104	Flexible Reamers Dia. 11.5 mm
10431206	Flexible Reamers Dia. 12.0 mm
10441208	Flexible Reamers Dia. 12.5 mm
10441300	Flexible Reamers Dia. 13.0 mm
10451302	Flexible Reamers Dia. 13.5 mm
10451404	Flexible Reamers Dia. 14.0 mm
10461406	Flexible Reamers Dia. 14.5 mm
10461508	Flexible Reamers Dia. 15.0 mm
10471500	Flexible Reamers Dia. 15.5 mm
10471602	Flexible Reamers Dia. 16.0 mm
10481604	Flexible Reamers Dia. 16.5 mm
10481706	Flexible Reamers Dia. 17.0 mm
10491708	Flexible Reamers Dia. 17.5 mm
10491800	Flexible Reamers Dia. 18.0 mm

## FLEXIBLE REAMERS WITH AO-SYNTHES CONNECTION AND AESCULAP CUTTING EDGE



REF.-No.	Description
<b>10496002</b>	Flexible Reamers Dia. 6.0 mm
<b>10496504</b>	Flexible Reamers Dia. 6.5 mm
<b>10497006</b>	Flexible Reamers Dia. 7.0 mm
<b>10497508</b>	Flexible Reamers Dia. 7.5 mm
<b>10498000</b>	Flexible Reamers Dia. 8.0 mm
<b>10498502</b>	Flexible Reamers Dia. 8.5 mm
<b>10499004</b>	Flexible Reamers Dia. 9.0 mm
<b>10499506</b>	Flexible Reamers Dia. 9.5 mm
<b>10501008</b>	Flexible Reamers Dia. 10.0 mm
<b>10511000</b>	Flexible Reamers Dia. 10.5 mm
<b>10511102</b>	Flexible Reamers Dia. 11.0 mm
<b>10511204</b>	Flexible Reamers Dia. 11.5 mm
<b>10521206</b>	Flexible Reamers Dia. 12.0 mm
<b>10531208</b>	Flexible Reamers Dia. 12.5 mm
<b>10531300</b>	Flexible Reamers Dia. 13.0 mm
<b>10541302</b>	Flexible Reamers Dia. 13.5 mm
<b>10541404</b>	Flexible Reamers Dia. 14.0 mm
<b>10551406</b>	Flexible Reamers Dia. 14.5 mm
<b>10551508</b>	Flexible Reamers Dia. 15.0 mm
<b>10561500</b>	Flexible Reamers Dia. 15.5 mm
<b>10561602</b>	Flexible Reamers Dia. 16.0 mm
<b>10571604</b>	Flexible Reamers Dia. 16.5 mm
<b>10571706</b>	Flexible Reamers Dia. 17.0 mm
<b>10581708</b>	Flexible Reamers Dia. 17.5 mm
<b>10581800</b>	Flexible Reamers Dia. 18.0 mm

## FLEXIBLE REAMERS WITH HUDSON CONNECTION AND SYNTHES CUTTING EDGE



REF.-No.	Description
<b>10586002</b>	Flexible Reamers Dia. 6.0 mm
<b>10586504</b>	Flexible Reamers Dia. 6.5 mm
<b>10587006</b>	Flexible Reamers Dia. 7.0 mm
<b>10587508</b>	Flexible Reamers Dia. 7.5 mm
<b>10588000</b>	Flexible Reamers Dia. 8.0 mm
<b>10588502</b>	Flexible Reamers Dia. 8.5 mm
<b>10589004</b>	Flexible Reamers Dia. 9.0 mm
<b>10589506</b>	Flexible Reamers Dia. 9.5 mm
<b>10591008</b>	Flexible Reamers Dia. 10.0 mm
<b>10601000</b>	Flexible Reamers Dia. 10.5 mm
<b>10601102</b>	Flexible Reamers Dia. 11.0 mm
<b>10611104</b>	Flexible Reamers Dia. 11.5 mm
<b>10611206</b>	Flexible Reamers Dia. 12.0 mm
<b>10621208</b>	Flexible Reamers Dia. 12.5 mm
<b>10621300</b>	Flexible Reamers Dia. 13.0 mm
<b>10631302</b>	Flexible Reamers Dia. 13.5 mm
<b>10641404</b>	Flexible Reamers Dia. 14.0 mm
<b>10651406</b>	Flexible Reamers Dia. 14.5 mm
<b>10651508</b>	Flexible Reamers Dia. 15.0 mm
<b>10661500</b>	Flexible Reamers Dia. 15.5 mm
<b>10661602</b>	Flexible Reamers Dia. 16.0 mm
<b>10671604</b>	Flexible Reamers Dia. 16.5 mm
<b>10671706</b>	Flexible Reamers Dia. 17.0 mm
<b>10681708</b>	Flexible Reamers Dia. 17.5 mm
<b>10681800</b>	Flexible Reamers Dia. 18.0 mm

## FLEXIBLE REAMERS WITH HUDSON CONNECTION AND OSTEO CUTTING EDGE



REF.-No.	Description
<b>10686002</b>	Flexible Reamers Dia. 6.0 mm
<b>10686504</b>	Flexible Reamers Dia. 6.5 mm
<b>10687006</b>	Flexible Reamers Dia. 7.0 mm
<b>10687508</b>	Flexible Reamers Dia. 7.5 mm
<b>10688000</b>	Flexible Reamers Dia. 8.0 mm
<b>10688502</b>	Flexible Reamers Dia. 8.5 mm
<b>10689004</b>	Flexible Reamers Dia. 9.0 mm
<b>10689506</b>	Flexible Reamers Dia. 9.5 mm
<b>10691008</b>	Flexible Reamers Dia. 10.0 mm
<b>10701000</b>	Flexible Reamers Dia. 10.5 mm
<b>10701102</b>	Flexible Reamers Dia. 11.0 mm
<b>10711104</b>	Flexible Reamers Dia. 11.5 mm
<b>10711206</b>	Flexible Reamers Dia. 12.0 mm
<b>10721208</b>	Flexible Reamers Dia. 12.5 mm
<b>10721300</b>	Flexible Reamers Dia. 13.0 mm
<b>10731302</b>	Flexible Reamers Dia. 13.5 mm
<b>10731404</b>	Flexible Reamers Dia. 14.0 mm
<b>10741406</b>	Flexible Reamers Dia. 14.5 mm
<b>10741508</b>	Flexible Reamers Dia. 15.0 mm
<b>10751500</b>	Flexible Reamers Dia. 15.5 mm
<b>10751602</b>	Flexible Reamers Dia. 16.0 mm
<b>10761604</b>	Flexible Reamers Dia. 16.5 mm
<b>10761706</b>	Flexible Reamers Dia. 17.0 mm
<b>10771708</b>	Flexible Reamers Dia. 17.5 mm
<b>10771800</b>	Flexible Reamers Dia. 18.0 mm

## FLEXIBLE REAMERS WITH HUDSON CONNECTION AND AESCULAP CUTTING EDGE



REF.-No.	Description
10776002	Flexible Reamers Dia. 6.0 mm
10776504	Flexible Reamers Dia. 6.5 mm
10777006	Flexible Reamers Dia. 7.0 mm
10777508	Flexible Reamers Dia. 7.5 mm
10778000	Flexible Reamers Dia. 8.0 mm
10778502	Flexible Reamers Dia. 8.5 mm
10779004	Flexible Reamers Dia. 9.0 mm
10779506	Flexible Reamers Dia. 9.5 mm
10781008	Flexible Reamers Dia. 10.0 mm
10791000	Flexible Reamers Dia. 10.5 mm
10791102	Flexible Reamers Dia. 11.0 mm
10801104	Flexible Reamers Dia. 11.5 mm
10801126	Flexible Reamers Dia. 12.0 mm
10901128	Flexible Reamers Dia. 12.5 mm
10901130	Flexible Reamers Dia. 13.0 mm
10911132	Flexible Reamers Dia. 13.5 mm
10911144	Flexible Reamers Dia. 14.0 mm
10921146	Flexible Reamers Dia. 14.5 mm
10921158	Flexible Reamers Dia. 15.0 mm
10931150	Flexible Reamers Dia. 15.5 mm
10931162	Flexible Reamers Dia. 16.0 mm
10941164	Flexible Reamers Dia. 16.5 mm
10941176	Flexible Reamers Dia. 17.0 mm
10951178	Flexible Reamers Dia. 17.5 mm
10951180	Flexible Reamers Dia. 18.0 mm

## FLEXIBLE REAMERS WITH ZIMMER CONNECTION AND SYNTHES CUTTING EDGE



REF.-No.	Description
0139002	Flexible Reamers Dia. 6.0 mm
0139004	Flexible Reamers Dia. 6.5 mm
0139006	Flexible Reamers Dia. 7.0 mm
0139008	Flexible Reamers Dia. 7.5 mm
0139010	Flexible Reamers Dia. 8.0 mm
0139012	Flexible Reamers Dia. 8.5 mm
0139014	Flexible Reamers Dia. 9.0 mm
0139016	Flexible Reamers Dia. 9.5 mm
0139018	Flexible Reamers Dia. 10.0 mm
0139020	Flexible Reamers Dia. 10.5 mm
0139022	Flexible Reamers Dia. 11.0 mm
0139024	Flexible Reamers Dia. 11.5 mm
0139026	Flexible Reamers Dia. 12.0 mm
0139028	Flexible Reamers Dia. 12.5 mm
0139030	Flexible Reamers Dia. 13.0 mm
0139032	Flexible Reamers Dia. 13.5 mm
0139034	Flexible Reamers Dia. 14.0 mm
0139036	Flexible Reamers Dia. 14.5 mm
0139038	Flexible Reamers Dia. 15.0 mm
0139040	Flexible Reamers Dia. 15.5 mm
0139042	Flexible Reamers Dia. 16.0 mm
0139044	Flexible Reamers Dia. 16.5 mm
0139046	Flexible Reamers Dia. 17.0 mm
0139048	Flexible Reamers Dia. 17.5 mm
0139050	Flexible Reamers Dia. 18.0 mm



## FLEXIBLE REAMERS WITH ZIMMER CONNECTION AND OSTEO CUTTING EDGE



REF.-No.	Description
0139102	Flexible Reamers Dia. 6.0 mm
0139104	Flexible Reamers Dia. 6.5 mm
0139106	Flexible Reamers Dia. 7.0 mm
0139108	Flexible Reamers Dia. 7.5 mm
0139110	Flexible Reamers Dia. 8.0 mm
0139112	Flexible Reamers Dia. 8.5 mm
0139114	Flexible Reamers Dia. 9.0 mm
0139116	Flexible Reamers Dia. 9.5 mm
0139118	Flexible Reamers Dia. 10.0 mm
0139120	Flexible Reamers Dia. 10.5 mm
0139122	Flexible Reamers Dia. 11.0 mm
0139124	Flexible Reamers Dia. 11.5 mm
0139126	Flexible Reamers Dia. 12.0 mm
0139128	Flexible Reamers Dia. 12.5 mm
0139130	Flexible Reamers Dia. 13.0 mm
0139132	Flexible Reamers Dia. 13.5 mm
0139134	Flexible Reamers Dia. 14.0 mm
0139136	Flexible Reamers Dia. 14.5 mm
0139138	Flexible Reamers Dia. 15.0 mm
0139140	Flexible Reamers Dia. 15.5 mm
0139142	Flexible Reamers Dia. 16.0 mm
0139144	Flexible Reamers Dia. 16.5 mm
0139146	Flexible Reamers Dia. 17.0 mm
0139148	Flexible Reamers Dia. 17.5 mm
0139150	Flexible Reamers Dia. 18.0 mm

## FLEXIBLE REAMERS WITH ZIMMER CONNECTION AND AESCULAP CUTTING EDGE



REF.-No.	Description
0139202	Flexible Reamers Dia. 6.0 mm
0139204	Flexible Reamers Dia. 6.5 mm
0139206	Flexible Reamers Dia. 7.0 mm
0139208	Flexible Reamers Dia. 7.5 mm
0139210	Flexible Reamers Dia. 8.0 mm
0139212	Flexible Reamers Dia. 8.5 mm
0139214	Flexible Reamers Dia. 9.0 mm
0139216	Flexible Reamers Dia. 9.5 mm
0139218	Flexible Reamers Dia. 10.0 mm
0139220	Flexible Reamers Dia. 10.5 mm
0139222	Flexible Reamers Dia. 11.0 mm
0139224	Flexible Reamers Dia. 11.5 mm
0139226	Flexible Reamers Dia. 12.0 mm
0139228	Flexible Reamers Dia. 12.5 mm
0139230	Flexible Reamers Dia. 13.0 mm
0139232	Flexible Reamers Dia. 13.5 mm
0139234	Flexible Reamers Dia. 14.0 mm
0139236	Flexible Reamers Dia. 14.5 mm
0139238	Flexible Reamers Dia. 15.0 mm
0139240	Flexible Reamers Dia. 15.5 mm
0139242	Flexible Reamers Dia. 16.0 mm
0139244	Flexible Reamers Dia. 16.5 mm
0139246	Flexible Reamers Dia. 17.0 mm
0139248	Flexible Reamers Dia. 17.5 mm
0139250	Flexible Reamers Dia. 18.0 mm

## FLEXIBLE REAMERS WITH TRINKLE CONNECTION AND SYNTHES CUTTING EDGE



REF.-No.	Description
10956002	Flexible Reamers Dia. 6.0 mm
10956504	Flexible Reamers Dia. 6.5 mm
10957006	Flexible Reamers Dia. 7.0 mm
10957508	Flexible Reamers Dia. 7.5 mm
10958000	Flexible Reamers Dia. 8.0 mm
10958502	Flexible Reamers Dia. 8.5 mm
10959004	Flexible Reamers Dia. 9.0 mm
10959506	Flexible Reamers Dia. 9.5 mm
10961008	Flexible Reamers Dia. 10.0 mm
10961100	Flexible Reamers Dia. 10.5 mm
10971102	Flexible Reamers Dia. 11.0 mm
10981104	Flexible Reamers Dia. 11.5 mm
10981126	Flexible Reamers Dia. 12.0 mm
10991128	Flexible Reamers Dia. 12.5 mm
11001130	Flexible Reamers Dia. 13.0 mm
11101132	Flexible Reamers Dia. 13.5 mm
11101144	Flexible Reamers Dia. 14.0 mm
11101146	Flexible Reamers Dia. 14.5 mm
11111158	Flexible Reamers Dia. 15.0 mm
11112150	Flexible Reamers Dia. 15.5 mm
11112162	Flexible Reamers Dia. 16.0 mm
11113164	Flexible Reamers Dia. 16.5 mm
11114176	Flexible Reamers Dia. 17.0 mm
11115178	Flexible Reamers Dia. 17.5 mm
11115180	Flexible Reamers Dia. 18.0 mm

## FLEXIBLE REAMERS WITH TRINKLE CONNECTION AND OSTEO CUTTING EDGE



REF.-No.	Description
11116002	Flexible Reamers Dia. 6.0 mm
11116504	Flexible Reamers Dia. 6.5 mm
11117006	Flexible Reamers Dia. 7.0 mm
11117508	Flexible Reamers Dia. 7.5 mm
11118000	Flexible Reamers Dia. 8.0 mm
11118502	Flexible Reamers Dia. 8.5 mm
11119004	Flexible Reamers Dia. 9.0 mm
11119506	Flexible Reamers Dia. 9.5 mm
11121008	Flexible Reamers Dia. 10.0 mm
11121100	Flexible Reamers Dia. 10.5 mm
11131102	Flexible Reamers Dia. 11.0 mm
11141104	Flexible Reamers Dia. 11.5 mm
11141126	Flexible Reamers Dia. 12.0 mm
11151128	Flexible Reamers Dia. 12.5 mm
11151130	Flexible Reamers Dia. 13.0 mm
11161132	Flexible Reamers Dia. 13.5 mm
11161144	Flexible Reamers Dia. 14.0 mm
11171146	Flexible Reamers Dia. 14.5 mm
11171158	Flexible Reamers Dia. 15.0 mm
11181150	Flexible Reamers Dia. 15.5 mm
11181162	Flexible Reamers Dia. 16.0 mm
11191164	Flexible Reamers Dia. 16.5 mm
11191176	Flexible Reamers Dia. 17.0 mm
11201178	Flexible Reamers Dia. 17.5 mm
11201180	Flexible Reamers Dia. 18.0 mm

## FLEXIBLE REAMERS WITH TRINKLE CONNECTION AND AESCULAP CUTTING EDGE



REF.-No.	Description
11216002	Flexible Reamers Dia. 6.0 mm
11216504	Flexible Reamers Dia. 6.5 mm
11217006	Flexible Reamers Dia. 7.0 mm
11217508	Flexible Reamers Dia. 7.5 mm
11218000	Flexible Reamers Dia. 8.0 mm
11218502	Flexible Reamers Dia. 8.5 mm
11219004	Flexible Reamers Dia. 9.0 mm
11219506	Flexible Reamers Dia. 9.5 mm
11221008	Flexible Reamers Dia. 10.0 mm
11231000	Flexible Reamers Dia. 10.5 mm
11231102	Flexible Reamers Dia. 11.0 mm
11241104	Flexible Reamers Dia. 11.5 mm
11241126	Flexible Reamers Dia. 12.0 mm
11251128	Flexible Reamers Dia. 12.5 mm
11251130	Flexible Reamers Dia. 13.0 mm
11261132	Flexible Reamers Dia. 13.5 mm
11261144	Flexible Reamers Dia. 14.0 mm
11271146	Flexible Reamers Dia. 14.5 mm
11271158	Flexible Reamers Dia. 15.0 mm
11281150	Flexible Reamers Dia. 15.5 mm
11281162	Flexible Reamers Dia. 16.0 mm
11291164	Flexible Reamers Dia. 16.5 mm
11291176	Flexible Reamers Dia. 17.0 mm
11301178	Flexible Reamers Dia. 17.5 mm
11301180	Flexible Reamers Dia. 18.0 mm

## GUIDE WIRES



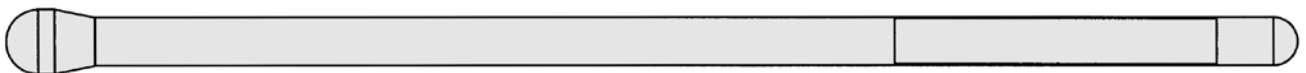
REF.-No.	Description
1131RO	Guide Rod Ø 2.4 mm x Length 900 mm



REF.-No.	Description
1132RO	Guide Rod Ø 3.0 mm x Length 900 mm



REF.-No.	Description
1133RO	Guide Rod with Olive Ø 3.0/Ø 2.0 mm x Length 900 mm

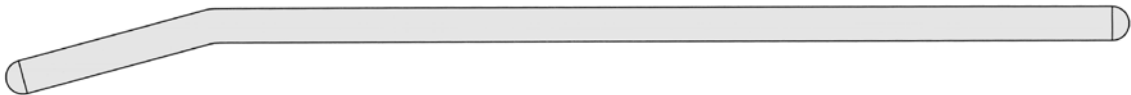


REF.-No.	Description
1134RO	Guide Rod with Olive Ø 4.0/Ø 3.0 mm x Length 900 mm

## GUIDE WIRES



REF.-No.	Description
1118410	Guide Rod with Ball Tip $\varnothing$ 4.0 / $\varnothing$ 2.4 mm x Length 900 mm (used for flexible reamers $\varnothing$ 8.0 mm up to $\varnothing$ 18 mm)



REF.-No.	Description
1119411	Curved Guide Rod $\varnothing$ 2.4 x Length 900 mm (used for fragment reduction)

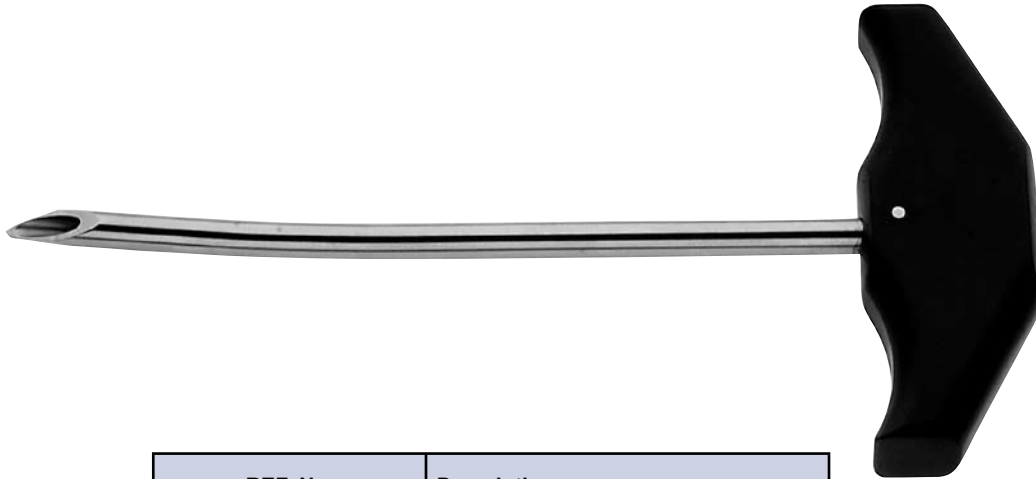
**WARNING: DON'T USE THIS GUIDE WIRES TO INTRODUCE INTERLOCKING NAILS AND FOR FLEXIBLE REAMING!**



REF.-No.	Description
1120412	Curved Guide Rod $\varnothing$ 3.0 x Length 900 mm (used for fragment reduction)

**WARNING: DON'T USE THIS GUIDE WIRES TO INTRODUCE INTERLOCKING NAILS AND FOR FLEXIBLE REAMING!**

## RECOMMEND INSTRUMENTS FOR FLEXIBLE REAMING



REF.-No.	Description
11210030	Cannulated Curved Awl Size 8 mm
11210040	Cannulated Curved Awl Size 10 mm
11210050	Cannulated Curved Awl Size 13 mm



REF.-No.	Description
11099	Curved Awl Size 8 mm
11097	Curved Awl Size 10 mm



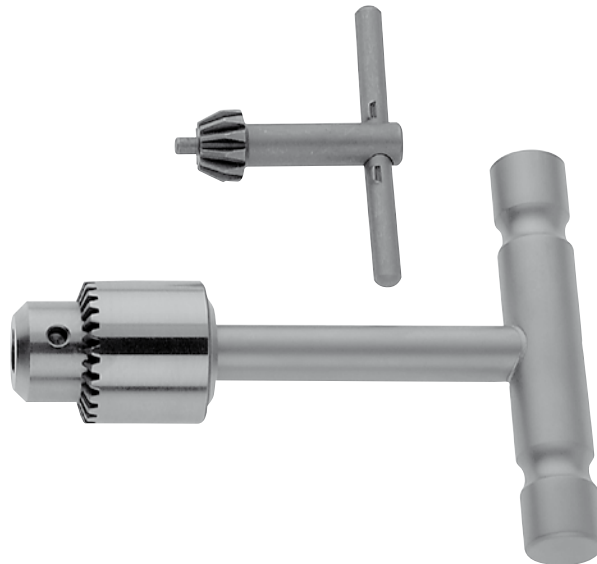
REF.-No.	Description
1140SP	Skin Protector



## RECOMMEND INSTRUMENTS FOR FLEXIBLE REAMERS



REF.-No.	Description
<b>8450.05</b>	Keyless chuck with T-Handle



REF.-No.	Description
<b>9190.05</b>	Jacobs chuck with T-Handle complete with key
<b>9190.01</b>	Key alone for Jacobs chuck with T-Handle

## RECOMMENDED INSTRUMENTS FOR FLEXIBLE REAMING



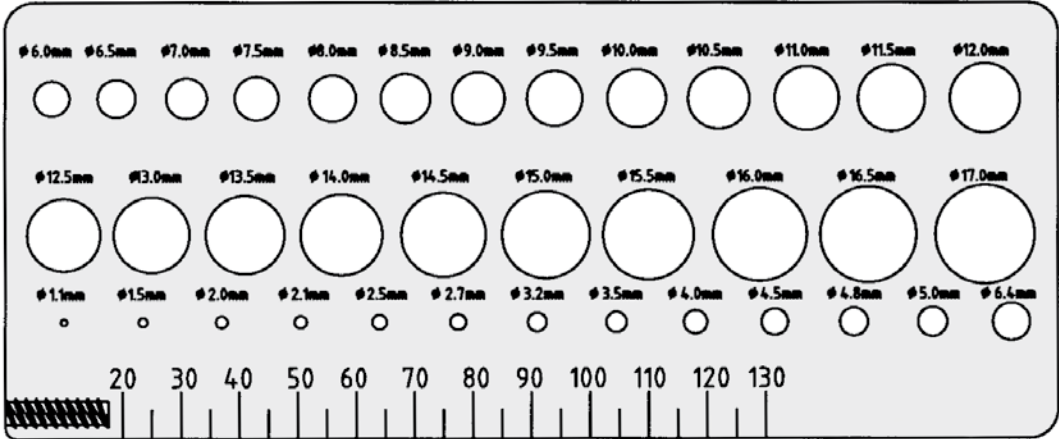
REF.-No.	Description
0118500	Intramedullary Exchange Tube for Guide Wires



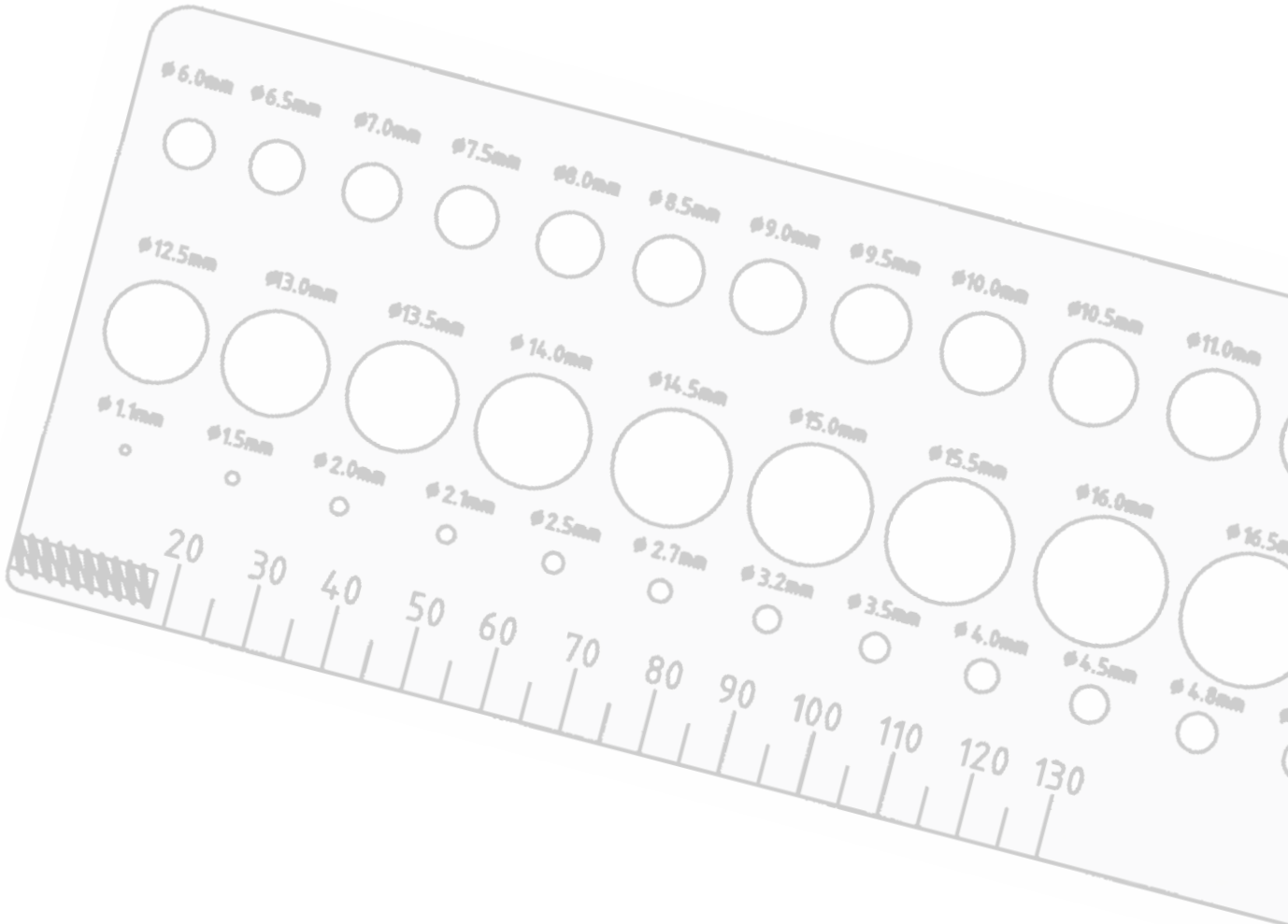
REF.-No.	Description
0118900	Reamer / Nail- and diameter Length Gauge



# REAMER / NAIL AND SCREW TEMPLATE



REF.-No.	Description
11888000	Reamer/Nail and Screw Template



# MATTES

INSTRUMENTE GmbH  
MEDIZINTECHNIK

**Mattes-Instrumente GmbH**  
Haldenstrasse 27 · D-78532 Tuttlingen  
Tel.: 07461 - 3643 · Fax: 07461 - 77399  
e-mail: [jens.mattes@mattes-medizintechnik.com](mailto:jens.mattes@mattes-medizintechnik.com)  
Internet: [www.mattes-medizintechnik.com](http://www.mattes-medizintechnik.com)